

# Camera Motion Research

**CONNEX** MINI

*Expanding Connex Capabilities with CMR Accessories*

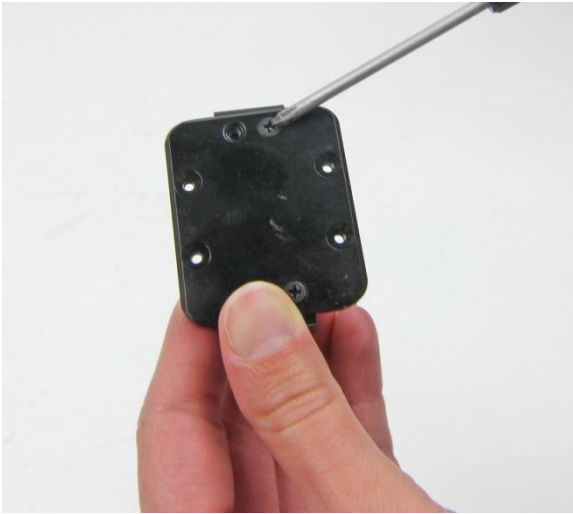
## Connex Mini SDI Converter Cage QuickGuide



[www.CAMOTIONLLC.com](http://www.CAMOTIONLLC.com)

Follow the step by step instructions here for assembling the Blackmagic Micro converter to the CMR Connex Mini cage assembly.

**Step 1.** Remove the two screws holding the short right angle bracket to the back of the cage assembly.



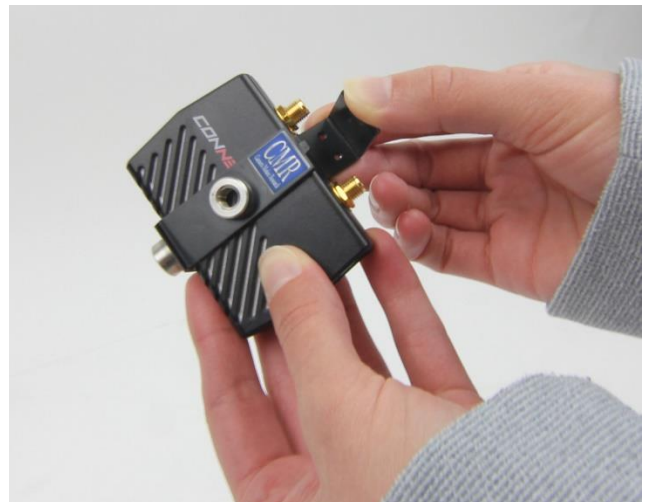
**Step 2.** Remove the short right angle bracket.



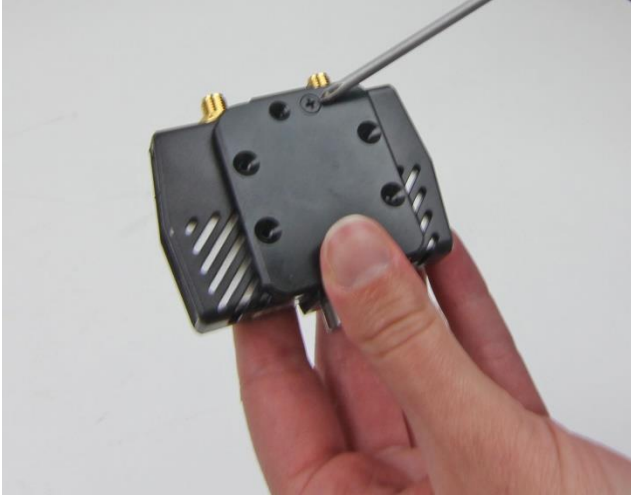
**Step 3.** With the short right angle bracket removed, Slide the support housing over the Connex mini TX. Note the main bracket goes on the Connex Mini side with the Connex logo.



**Step 4.** Position the short right angle bracket over the top of the Connex Mini TX. Press it into place so that the tab on the main bracket snaps into the hole in the short bracket.



**Step 5** Position the housing in the center of the Connex Mini TX (center the short right angle bracket between the antenna connectors). Insert the two screws removed in step 1, and tighten to secure the housing.



**Step 6.** Insert the voltage converter into the Blackmagic converter bracket as shown below. Note the micro USB cable end should be at the side of the Blackmagic converter micro USB power port. Center the converter in the support bracket



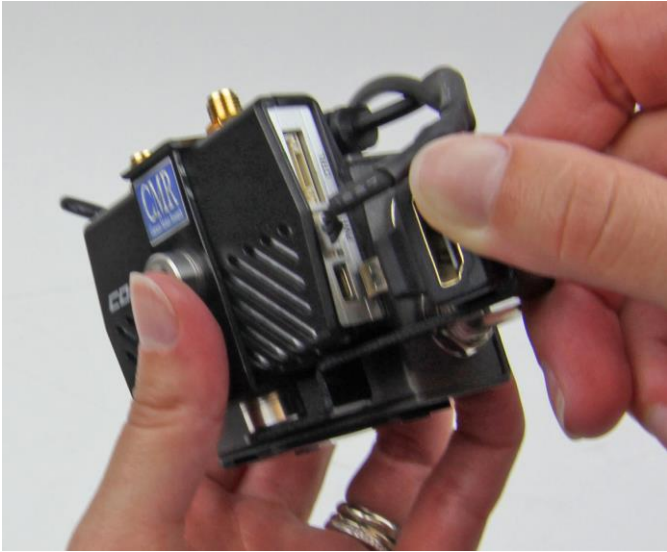
**Step 7.** Hold the Blackmagic converter behind the Connex Mini over the Mini cage plate as shown below.



**Step 8.** Plug the D-tap cable JST power cable into the Connex Mini Power port. Press in until it clicks locked.



**Step 9.** Insert the HDMI micro locking bracket into the micro HDMI port on the Connex Mini.



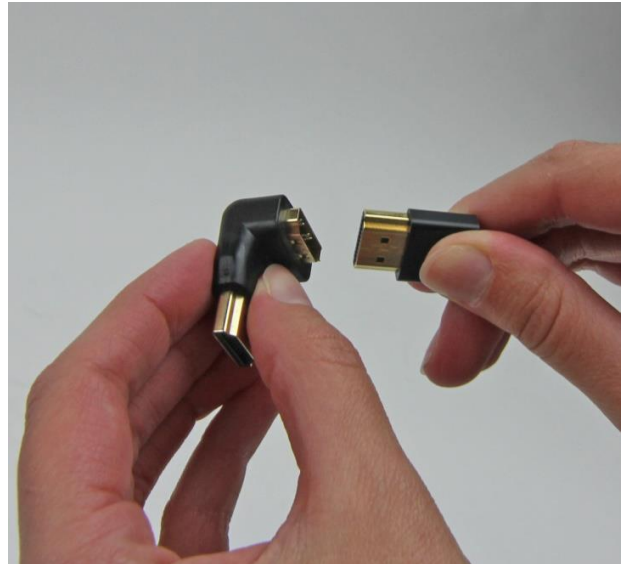
**Step 10.** With the Blackmagic converter mounting bracket on top of the HDMI micro locking bracket, insert the ¼-20 nut and tighten firmly. Note: make sure the Blackmagic converter is pressed up tightly to the support housing while tightening the nut.



**Step 11.** Install the rod antennas.



**Step 12.** Insert one end of the HDMI cable into the right angle adapter.



**Step 13.** Plug in the voltage converter micro USB connector to the Blackmagic power input port. Plug The right angle HDMI connector into the HDMI port.



**Step 14.** Plug the other end of the HDMI cable into the full size HDMI port.



### Connex Mini Operational Notes

- ✓ The Connex Mini provides plug and play wireless transmission of HDMI video signals, but does not transmit audio.
- ✓ Frequency selection from one of 9 available channels is automatic.
- ✓ The Connex Mini transmitter does not have a power switch (unlike the receiver which has one)
- ✓ Refer to the Amimon Connex/ Connex Mini User Guide for information about how the two LEDs, video and network, on the transmitter (air unit) and receiver (ground unit) show the status of a connection and video input.
- ✓ A Link to the Amimon Connex/Connex Mini User Guide is here....  
<http://connex.amimon.com/sites/connex/UserContent/files/CONNEX%20and%20CONNEX%20Mini%20User%20Guide.pdf>
- ✓ Note that the receiver has an On Screen Display (OSC) button to turn on, or turn off the On Screen Display. Normally you would have the On Screen Display turned off so that the OSD information is not overlaid onto the camera video.
- ✓ The Connex Mini can transmit to up to 4 receivers simultaneously.
- ✓ If two or more Connex sets are being used, it is recommended that all receivers be spaced away from each other by at least 4 feet for best performance.
- ✓ The Blackmagic Micro converter will not work with the Amimon Connex Mini at 23.98 or 24 PsF.